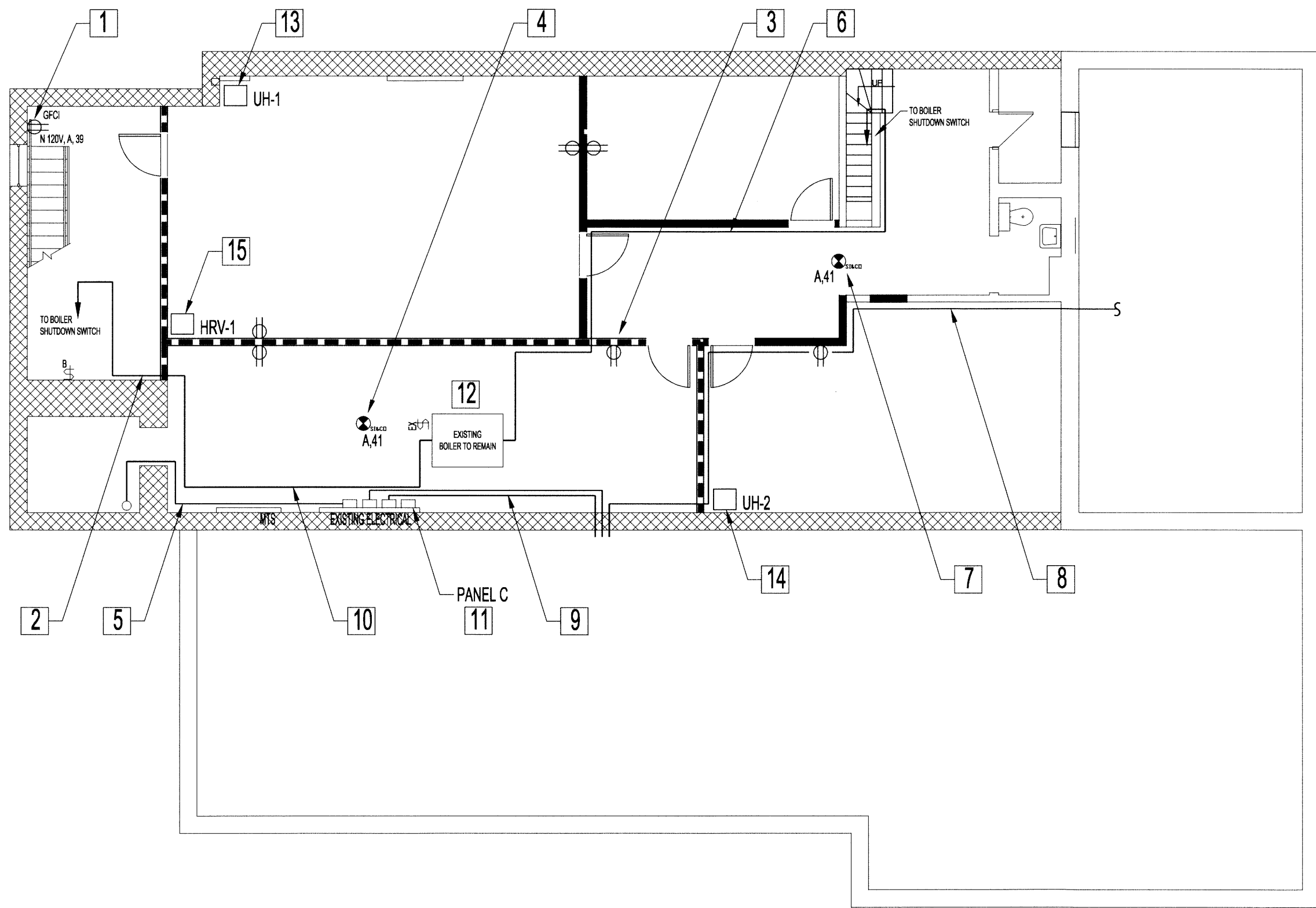
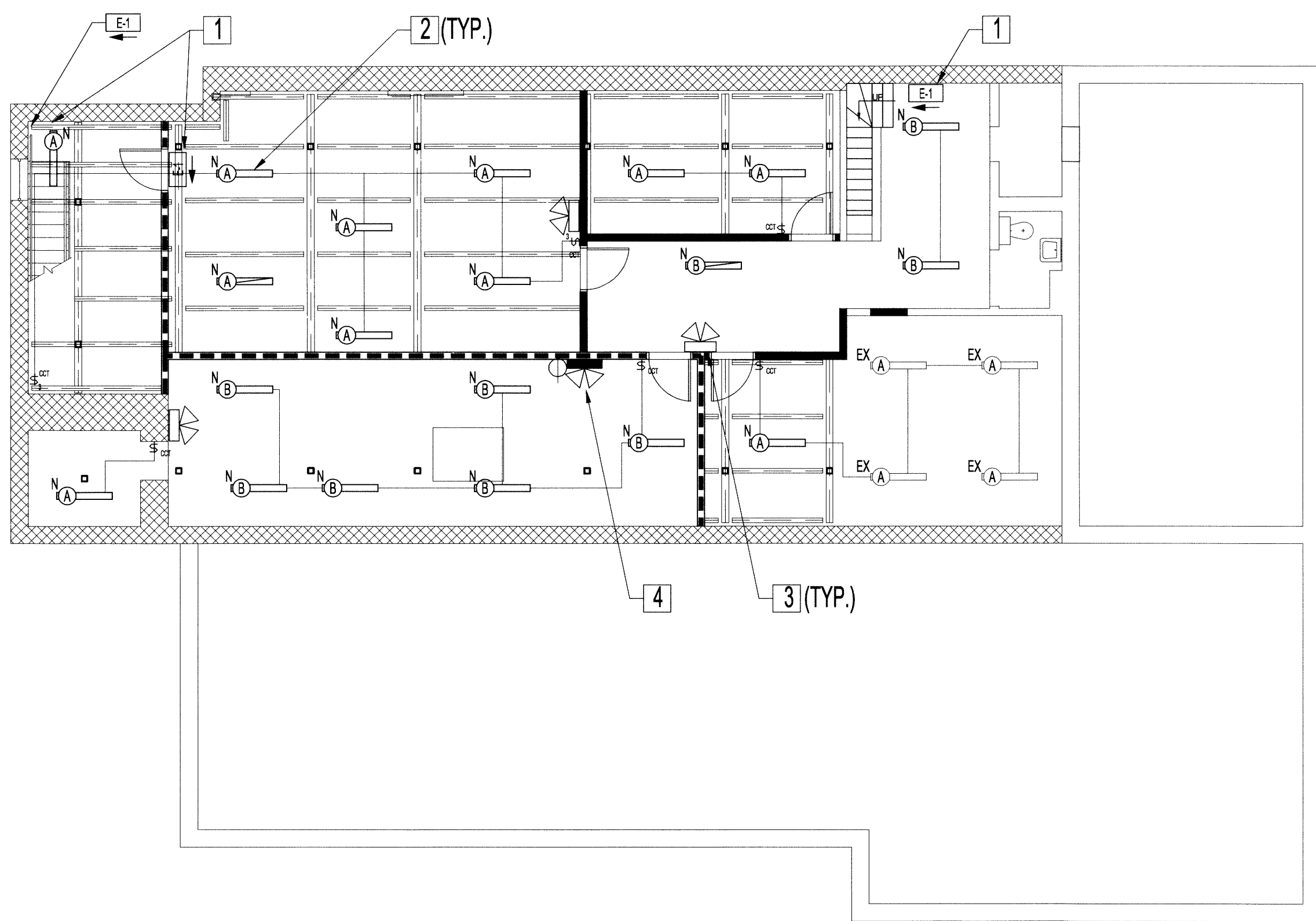


FILE NAME: 2013047V0.dwg E3 DATE: 2014.07.14 PROJECT No: 2013-047 SHEET TITLE: BASEMENT FLOOR PLAN - ELECTRICAL POWER & LIGHTING RENOVATION ADDRESS: 598 ST. MARY'S ROAD



1 BASEMENT & CRAWLSPACE FLOOR PLAN - ELECTRICAL POWER RENOVATION
SCALE: 1/8"=1'-0"



2 BASEMENT & CRAWLSPACE FLOOR PLAN- ELECTRICAL LIGHTING & REFLECTED CEILING RENOVATION
SCALE: 1/8"=1'-0"

BASEMENT ELECTRICAL RENOVATION NOTES:
SUPPLY & INSTALL NEW UNLESS OTHERWISE NOTED. ALSO SEE ELECTRICAL DEMOLITION DWG. SUPPLY & INSTALL GFCI CIRCUIT BREAKER TO PROTECT BASEMENT RECEPTACLES. BREAKERS TO SUIT EXISTING PANEL 'A' & PANEL 'B'. CONTRACTOR TO CONFIRM.

- 1 DEDICATED, 120V CIRCUIT, 15 AMP BREAKER, DEVICE BOX, GFCI RECEPTACLE & WIRING FOR COMBINATION EXIT SIGN, 2 HEAD EMERGENCY LIGHT & REMOTE HEADS. MOUNT DEVICE BOX TO NEW WALL 6'-6" FROM FINISHED FLOOR.
- 2 RE-FASTEN EXISTING BX CABLE FROM BOILER SHUT-OFF SWITCH TO WALL MOUNTED JUNCTION BOX. RE-FASTEN TO STONE WALLS AND AS CLOSE TO CONCRETE CEILING AS POSSIBLE.
- 3 PROVIDE NEW RECEPTACLES AND WIRE TO PANEL A CIRCUIT 42.
- 4 DEDICATED, 120V, 15 AMP CIRCUIT, OCTAGON BOX & EMT FOR COMBINATION SMOKE & CARBON MONOXIDE DETECTORS. SURFACE MOUNT BOX TO CONCRETE CEILING. WIRE AS PER SCHEDULE.
- 5 FASTEN EXISTING PANEL A FEEDER TO CONCRETE CEILING. REMOVE ANY EXCESS CABLE IF NECESSARY.
- 6 EMT & WIRING FROM MECHANICAL RM (B06) BOILER JUNCTION BOX TO TOP OF MAIN FLOOR STAIRWAY (B08). SURFACE MOUNT DEVICE BOX TO STAIRWAY (B08) WALL 78" MIN. FROM FINISHED FLOOR TO CENTER OF BOX.
- 7 EMT, OCTAGON BOX, WIRING & CARBON MONOXIDE & SMOKE DETECTOR FROM MECHANICAL RM. (B06) TO CORRIDOR (B04). RUN EMT & WIRING ALONG CONCRETE CEILING, WALLS & WITHIN NEW CORRIDOR DRYWALL CEILING. RECESS BOX & SURFACE MOUNT DETECTOR AND WIRE AS PER SCHEDULE.
- 8 FASTEN EXISTING PANEL A TO CONCRETE CEILING AND RUN ALONG WALL. MAINTAIN FIRE RATING WHEN GOING THROUGH FIRE RATED WALL.
- 9 FASTEN EXISTING MAIN POWER FEEDER TO CONCRETE CEILING AS CLOSE TO EXTERIOR WALL AS POSSIBLE. REMOVE ANY EXCESS CABLE IF NECESSARY.
- 10 RECONNECT EXISTING WATER TANK TO SAME BREAKER AS BEFORE.
- 11 PROVIDE A NEW 100A FUSED DISCONNECT TO FEED PANEL C. PROVIDE A 42 CIRCUIT PANEL C.
- 12 PROVIDE POWER TO CONDENSATE RETURN PUMP.
- 13 PROVIDE POWER TO NEW UNIT HEATER UH-1
- 14 PROVIDE POWER TO NEW UNIT HEATER UH-2
- 15 PROVIDE POWER TO NEW UNIT HEATER HRV-1

BASEMENT ELECTRICAL RENOVATION NOTES:

- 1 COMBINATION EXIT SIGN & 2 HEAD EMERGENCY LIGHT. SURFACE MOUNT UNIT TO NEW WALL 6'-6" FROM FINISHED FLOOR.
- 2 (20) CEILING MOUNTED FLUORESCENT LIGHT FIXTURES & WIRING.
- 3 REMOTE 2 LAMP EMERGENCY LIGHT. SURFACE MOUNT LIGHT TO CONCRETE BEAM 90" FROM FINISHED FLOOR. WIRE TO BATTERY UNIT.
- 4 INSTALL BATTERY UNIT LARGE ENOUGH TO SUPPLY ALL EMERGENCY LIGHTING IN BASEMENT FOR 30 MINUTES.

NOTES ON MAINTENANCE OF SERVICE:

FACILITY IS PLANNED TO BE OPEN FOR ONE DAY A WEEK DURING RENOVATIONS. PROVIDE AN ALTERNATE PRICE AND SCHEDULE TO MAINTAIN BUILDING OCCUPANCY DURING CONSTRUCTION.

PANEL 'C' (BASEMENT)		42-POLE		BUS RATING 225A		MOUNTING: RECESSED	
DEMAND LOAD	CONCTD LOAD	CIRCUIT DESCRIPTION	CIRCUIT NO. 15A 1P, (1 1/2" TANDEM BREAKERS) UNLESS OTHERWISE NOTED	CIRCUIT DESCRIPTION	CONCTD LOAD	DEMAND LOAD	
		UH-1	1	2			
		UH-2	3	4			
		HRV-1	5	6			
		CONDENSATE PUMP	7	8			
			9	10			
			11	12			
			13	14			
			15	16			
			17	18			
			19	20			
			21	22			
			23	24			
			25	26			
			27	28			
			29	30			
			31	32			
			33	34			
			35	36			
			37	38			
			39	40			
			41	42			

LIGHT FIXTURE SCHEDULE					
TYPE	QTY.	MANUFACTURER	CATALOGUE No.	LAMP	DESCRIPTION
N (A)	11	LITHONIA	SB/2/32/120/GEB10IS	2X32W, T8	1'X4' SWIVEL STEM HUNG, FLUORESCENT FIXTURE, 120V, 1PH
N (B)	9	LIGHTOLIER	QHE2GPFOP228	2X34W, T8	1'X4' SURFACE MOUNT, FLUORESCENT FIXTURE, 120V, 1PH
	3	EDWARDS	900-0119		COMBINATION CARBON MONOXIDE AND SMOKE ALARM WIRE IN PARALLEL
N (E-1)	3	LUMACELL	8LMCE SERIES	DOUBLE LAMP	2 MICRO TUNGSTEN LAMPS 6V, 9W. TO BE WIRED TO EMERGENCY LIGHTING BATTERY PACK IN BASEMENT MECHANICAL ROOM (B06). MOUNT 4 INCHES BELOW FINISHED CEILING HEIGHT.
	3	LUMACELL	RS20	DOUBLE REMOTE LAMP	1'X4' SURFACE MOUNT, FLUORESCENT FIXTURE, 120V, 1PH
	1	LUMACELL	RGS SERIES	DOUBLE LAMP	2 MICRO TUNGSTON 6V, 9W

ALL NEW LIGHTING FIXTURES AND BALLASTS TO BE POWERSMART APPROVED. LIGHTING FIXTURE QUANTITIES SHOWN ABOVE ARE FOR REFERENCE ONLY. CONTRACTOR IS RESPONSIBLE FOR QUANTITY TAKE-OFF FROM DRAWINGS.

NOTES:

0	ISSUED FOR CONSTRUCTION	AP	AUG 15 2014
No.	REVISION/DESCRIPTION	BY	DATE



DRAWN	JAW/RCP	CHECKED	DESIGNED	APPROVED
DATE	2014.07.14	USER	APPROVAL	

THE CITY OF WINNIPEG
PLANNING, PROPERTY AND DEVELOPMENT DEPARTMENT
MUNICIPAL ACCOMMODATIONS DIVISION
3-65 GARRY STREET, R3C 4K4

PROJECT
AMBULANCE STATION # 3
STRUCTURAL & OCCUPANCY UPGRADES
DESIGN OF STRUCTURAL UPGRADES

598 ST. MARY'S ROAD
SHEET TITLE
BASEMENT & CRAWLSPACE FLOOR PLAN
ELECTRICAL
POWER & LIGHTING RENOVATION

SCALE	PROJECT No:	SHEET No:
AS SHOWN	2013-047	E3

